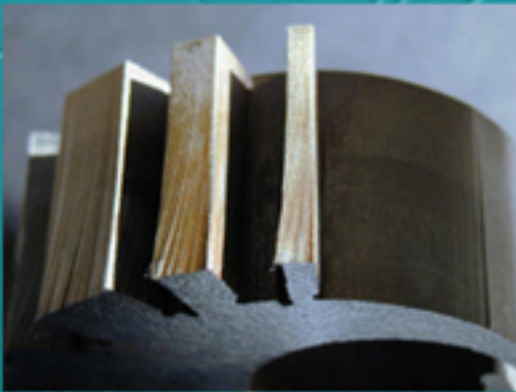




**PRECISION WATERJET, INC.** is a waterjet and laser cutting job shop with a vision. Constantly striving to offer our customers the latest innovations and the finest quality cutting services, we added the new and exclusive **DYNAMIC WATERJET™** machine.

With the revolutionary **DYNAMIC WATERJET™**, we can now offer you a finished product that cannot be duplicated by traditional waterjet shops. We cut through thick materials and still hold tolerances of +/- .005" with a draft angle tolerance of +/- 0.2°.

Our **DYNAMIC WATERJET™** allows us to cut your parts more efficiently. You, as our customer, enjoy precisely cut parts at a very competitive cost with a fast turnaround time. In addition, the parts have a smooth finish with zero taper thus eliminating the need for costly de-burring, grinding, and other expensive secondary machining.



Part cut without Dynamic Waterjet™, showing taper



Part cut with Dynamic Waterjet™, showing elimination of taper



Cut without Dynamic Waterjet™

Cut with Dynamic Waterjet™

